



BASE4

BASE4
3858 GLADES ROAD, #31
BOCA RATON, FLORIDA 33434
1.720.725.4544 www.base-4.com

SEAL



GARRY VERMAAS, PhD, PE
2011.08.05
9011 EDGEWATER BEND
PARKLAND, FLORIDA, 33076



ISSUE:

Issued for Permit
08.05.2016

PROJECT: 16-018

Hampton Inn & Suites

New Stanton, PA 15672

OWNER:

Stanton Hospitality LLC

52 Blueberry Lane,
Grove City, PA 16127

No.	Issue Date	Project Status

DATE 2016.08.05

DRAWN BY HAB

CHECKED BY GWV

SCALE AS NOTED

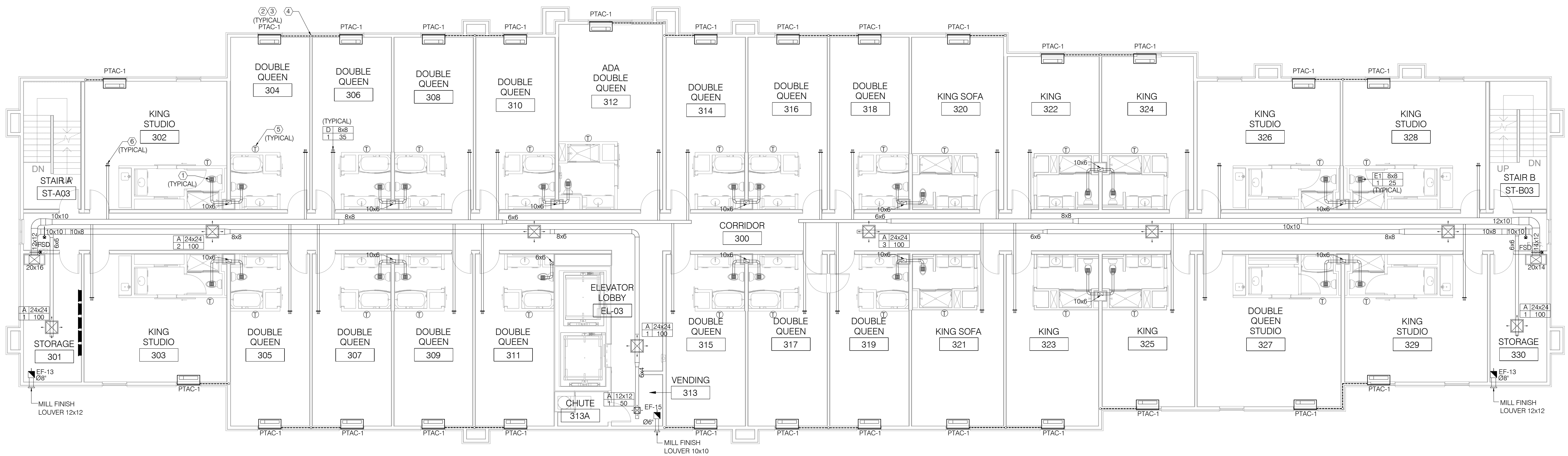
PROJECT NO. B4-67-1603

SHEET NAME

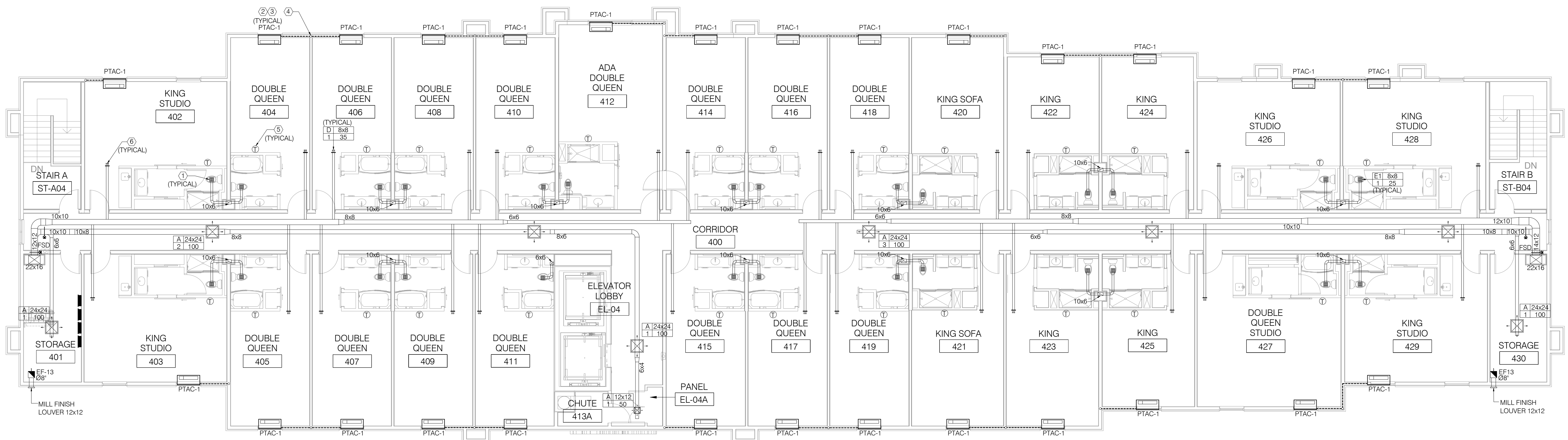
THIRD & FOURTH FLOOR
MECHANICAL PLAN

SHEET NO.

M203



01 THIRD FLOOR MECHANICAL PLAN
SCALE: 1/8" = 1'-0"



02 FOURTH FLOOR MECHANICAL PLAN
SCALE: 1/8" = 1'-0"

- KEY NOTES:
- EXHAUST WILL BE EXTENDED AT LEAST 22" VERTICALLY IN EXHAUST RISER REFER TO REVERSE.
 - NO OUTDOOR AIR ALLOWED TO BE BROUGHT IN TO ROOM THROUGH PTAC UNITS. FRESH AIR CONTROL ARM TO BE CLOSED. TYPICAL ALL PTAC UNITS.
 - ELBOW CONDENSATE DRAIN CONNECT TO NEAREST CONDENSATE RISER. TYPICAL FOR ALL PTAC UNITS UNLESS NOTED OTHERWISE.
 - 1-1/4" CONDENSATE RISER UP. SEE UPPER FLOOR PLANS FOR CONTINUATION. TYPICAL FOR ALL PTAC UNITS UNLESS NOTED OTHERWISE.
 - MECHANICAL CONTRACTOR TO CO-ORDINATE T-STAT LOCATION AS PER ID.
 - ALL GUESTROOM OR DIFFUSERS SHOULD BE AMERICAN AULES CO. R/W CONSTANT SUPPLY REGISTER WITH INTEGRATED CARL CONSTANT AIRFLOW REGULATOR.